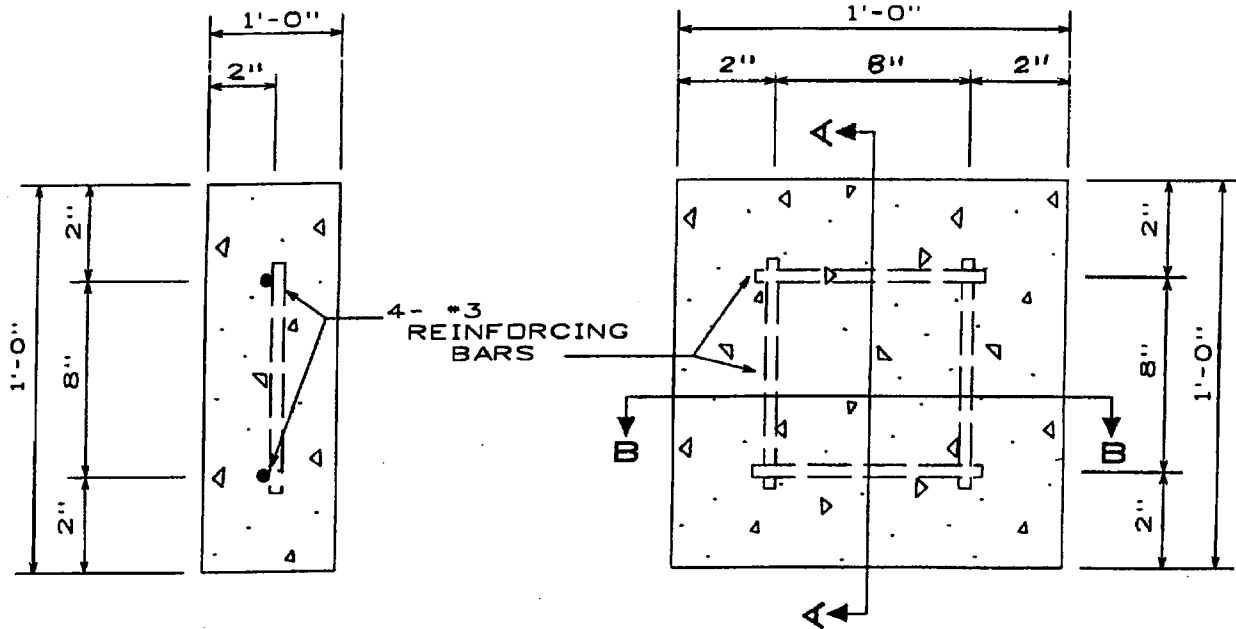
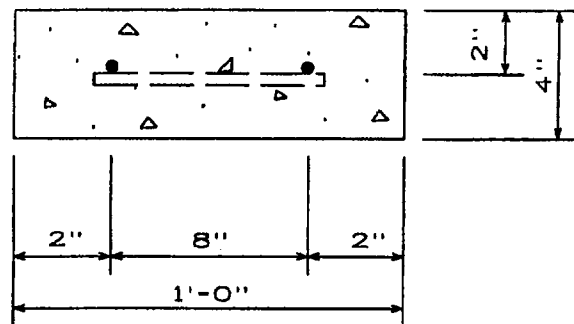


PRECAST CONCRETE THRUST BLOCK



TYPE SECTION- A - A
NOT TO SCALE

PLAN - PRECAST CONG. THRUST BLOCK
NOT TO SCALE



TYPE SECTION- B - B
NOT TO SCALE

NOTE:

THE CONCRETE SHALL CONFORM TO THE CITY OF SAN ANTONIO SPECIFICATION FOR PUBLIC WORKS ITEM NO. 300 AND SHALL BE CLASS "A" CONCRETE WITH A MINIMUM 28-DAYS COMPRESSIVE STRENGTH OF 3,000 PSI. ALL REINFORCING STEEL SHALL CONFORM TO COCA ITEM NO. 301. A MINIMUM OF 14-DAY CURE TIME SHALL BE PROVIDED PRIOR TO DELIVERY TO THE SAN ANTONIO WATER SYSTEM.